

# ROMOLO PRIVATE TERRACE

*Milan, Italy*




---

*Category*  
Roof garden

*Year*  
2013

*Area*  
200 m<sup>2</sup> (2,200 sq. ft.)

*Landscape Architecture*  
Cristina Mazzucchelli

*Architecture*  
Sangiorgi s.p.a.

*Photography*  
Matteo Carassale

The Romolo roof terrace at is a playful, open-plan garden for entertaining and offers peaceful seclusion from the city and shade from the hot Milan summer sun.

The terrace is divided into three main areas, each with their own functional identity and atmosphere. The large dining area adjacent to the property is dominated by a pergola, which has retractable awnings to provide varying amounts of shade. An area with a large sofa offers a semi-enclosed place for a quiet drink of an evening. A third, more intimate space is formed by taller lush plantings creating a cozy nook in which to relax. The three spaces are visually open to each other creating a light openness to the terrace that fosters an atmosphere of cool serenity.

Planting keeps the boundaries of the space and is used primarily for screening views from neighboring properties. Structure in the planting comes from snowy mespilus, the strawberry tree, and crepe myrtle, all chosen for their limited size. Much of the herbaceous planting, such as fountain grass, sedge, silvergrass, and bamboo has a soft nebulous form to it, reminiscent of clouds, thus conceptually linking the roof garden with its lofty location.

---

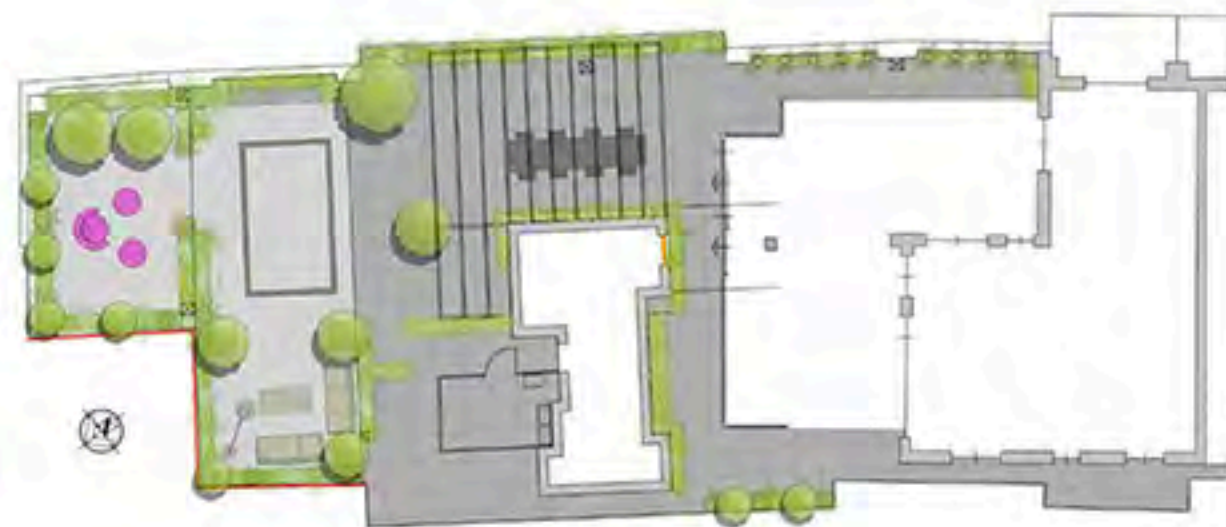
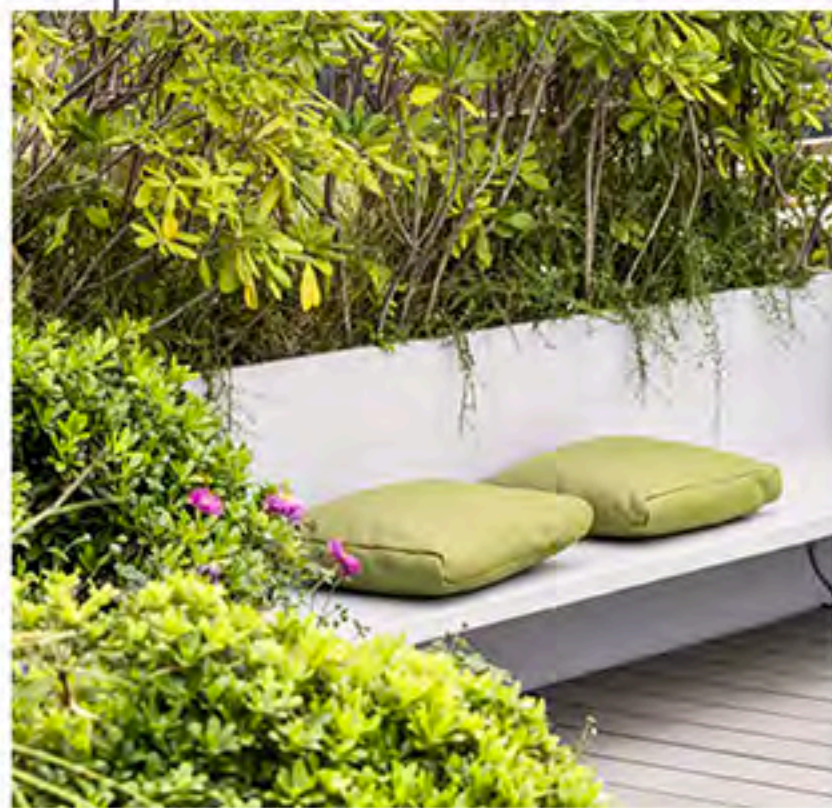








Previous page and below: Purple has been used as an accent color, not only in the soft furnishings, but also in plants such as the Japanese maple, geraniums, and sedums.



#### Climate

USDA Zone 9a (-6.7 to -3.9°C / 20 to 25°F)

#### Plants

Bisset's bamboo (*Phyllostachys bissetii*)  
 Chinese fountain grass (*Pennisetum alopecuroides* 'Little Bunny')  
 Crepe myrtle (*Lagerstroemia* 'Muskogee')  
 Geranium (*Geranium* × *cantabrigiense* 'Biokovo')  
 Purple Japanese maple (*Acer palmatum* 'Atropurpureum')  
 Sedum (*Sedum* 'Herbstfreude')  
 Silvergrass (*Miscanthus sinensis* 'Morning Light')  
 Snowy mespilus (*Amelanchier lamarckii*)  
 Strawberry tree (*Arbutus unedo*)  
 White variegated Japanese sedge (*Carex oshimensis* 'Everest')