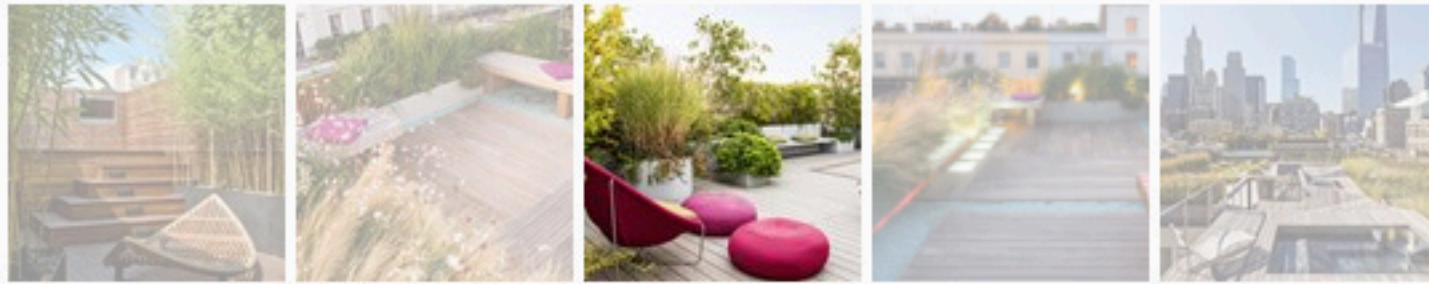


ROOF GARDEN DESIGN



Matteo Carassale



[+ 3 more](#)

no. 5

ROOF TERRACE WITH MODERN GARDEN FURNITURE



Romolo Private Terrace, Milan, Italy, [Cristina Mazzucchelli](#)

Category: Roof garden

Year: 2013

Area: 200 m² (2,200 sq. ft.)

Landscape Architecture: Cristina Mazzucchelli

Architecture: Sangiorgi s.p.a.

Photography: Matteo Carassale

The Romolo roof terrace at is a playful, open-plan garden for entertaining and offers peaceful seclusion from the city and shade from the hot Milan summer sun.

The terrace is divided into three main areas, each with their own functional identity and atmosphere. The large dining area adjacent to the property is dominated by a pergola, which has retractable awnings to provide varying amounts of shade. An area with a large sofa offers a semi-enclosed place for a quiet drink of an evening. A third, more intimate space is formed by taller luscious plantings creating a cozy nook in which to relax. The three spaces are visually open to each other creating a light openness to the terrace that fosters an atmosphere of cool serenity.

Planting keeps the boundaries of the space and is used primarily for screening views from neighboring properties. Structure in the planting comes from snowy mespilus, the strawberry tree, and crepe myrtle, all chosen for their limited size. Much of the herbaceous planting, such as fountain grass, sedge, silvergrass, and bamboo has a soft nebulous form to it, reminiscent of clouds, thus conceptually linking the roof garden with its lofty location.

© *Living Roofs*, published by teNeues, www.teneues.com, Romolo Private Terrace, Milan, Italy, Cristina Mazzucchelli © Matteo Carassale.

LIKE THIS? THEN YOU'LL LOVE

City Gardens